

See discussions, stats, and author profiles for this publication at: <https://www.researchgate.net/publication/326463790>

ACC Sulcal Patterns and Their Modulation on Cognitive Control Efficiency Across Lifespan: A Neuroanatomical Study on Bilinguals and Monolinguals

Article in *Cerebral Cortex* · July 2018

DOI: 10.1093/cercor/bhy175

CITATIONS

0

8 authors, including:



Nicola Del Maschio

Università Vita-Salute San Raffaele

4 PUBLICATIONS **2** CITATIONS

[SEE PROFILE](#)



Simone Sulpizio

Università Vita-Salute San Raffaele

55 PUBLICATIONS **227** CITATIONS

[SEE PROFILE](#)



Davide Fedeli

Università degli Studi di Milano-Bicocca

3 PUBLICATIONS **0** CITATIONS

[SEE PROFILE](#)



Guosheng Ding

Beijing Normal University

67 PUBLICATIONS **1,191** CITATIONS

[SEE PROFILE](#)

Some of the authors of this publication are also working on these related projects:



bilingual aphasia [View project](#)



Multimodal Imaging of Dementia [View project](#)

ORIGINAL ARTICLE

ACC Sulcal Patterns and Their Modulation on Cognitive Control Efficiency Across Lifespan: A Neuroanatomical Study on Bilinguals and Monolinguals

Nicola Del Maschio¹, Simone Sulpizio¹, Davide Fedeli¹, Keerthi Ramanujan², Guosheng Ding³, Brendan S. Weekes^{2,4}, Arnaud Cachia^{5,6,7,8} and Jubin Abutalebi^{1,2}

¹Centre for Neurolinguistics and Psycholinguistics, University Vita-Salute San Raffaele, Milano, Italy, ²Department of Speech and Hearing Sciences, University of Hong Kong, Hong Kong, China, ³State Key Laboratory of Cognitive Neuroscience and Learning, Beijing Normal University, Beijing, China, ⁴School of Psychological Sciences, Faculty of Dentistry, Medicine and Health Sciences, University of Melbourne, Parkville, Australia, ⁵Laboratory for the Psychology of Child Development and Education, Sorbonne, CNRS UMR8240, Paris, France, ⁶Paris Descartes University, Sorbonne Paris Cité, Paris, France, ⁷Institut Universitaire de France, Paris, France and ⁸Imaging Biomarkers for Brain Development and Disorders, Ste Anne Hospital, INSERM UMR894, Paris, France

Address correspondence to Prof. Jubin Abutalebi, Vita-Salute San Raffaele University, Via Olgettina, 58, 20132 Milan, Italy. Email: abutalebi.jubin@hsr.it

Abstract

The anterior cingulate cortex (ACC) is a key structure implicated in the regulation of cognitive control (CC). Previous studies suggest that variability in the ACC sulcal pattern—a neurodevelopmental marker unaffected by maturation or plasticity after birth—is associated with intersubject differences in CC performance. Here, we investigated whether bilingual experience modulates the effects of ACC sulcal variability on CC performance across the lifespan. Using structural MRI, we first established the distribution of the ACC sulcal patterns in a large sample of healthy individuals ($N = 270$) differing on gender and ethnicity. Second, a participants' subsample ($N = 157$) was selected to test whether CC performance was differentially affected by ACC sulcation in bilinguals and monolinguals across age. A prevalent leftward asymmetry unaffected by gender or ethnicity was reported. Sulcal variability in the ACC predicted CC performance differently in bilinguals and monolinguals, with a reversed pattern of structure–function relationship: asymmetrical versus symmetrical ACC sulcal patterns were associated with a performance advantage in monolinguals and a performance detriment to bilinguals and vice versa. Altogether, these findings provide novel insights on the dynamic interplay between early neurodevelopment, environmental background and cognitive efficiency across age.

Key words: anterior cingulate cortex (ACC), bilingualism, cognitive control, paracingulate sulcus (PCS)

Introduction

The ability to optimize behavior when confronted with changing environmental demands is essential to everyday life. The dorsal anterior cingulate cortex (ACC), located bilaterally in the medial frontal lobes, is a key structure implicated in the regulation of attention and cognitive control (CC) (Botvinick et al. 2001; Petersen and Posner 2012; Yeung 2013). The considerable heterogeneity of the ACC in terms of connectivity, cytology and receptor organization (Devinsky et al. 1995; Palomero-Gallagher et al. 2008) is paired with an extensive interindividual and inividual variability in gyral and sulcal architecture (Vogt and Palomero-Gallagher 2012). Increasing evidence shows that individual differences in ACC sulcal pattern are related to functional consequences across a range of executive cognitive tasks both in healthy and clinical populations (Yücel et al. 2003a; Fornito et al. 2004; Buda et al. 2011; Cachia et al. 2014). In this study, we investigate whether ACC sulcal patterns predict CC performance differently when the sample has variable linguistic experience, that is, when participants use one versus multiple languages across the lifespan.

Anatomical magnetic resonance imaging (MRI) investigations of healthy participants show that individual variation in CC is correlated with differences in ACC structure as indexed by measures of local cortical thickness (Westlye et al. 2011), cortical surface area (Fjell et al. 2012) and regional gray matter volume (Takeuchi et al. 2012). In clinical studies, structural abnormalities of the ACC have been reported in disorders associated with CC deficits such as schizophrenia (Fornito et al. 2009), attention deficit hyperactivity disorder (ADHD) (Dickstein et al. 2006) and obsessive-compulsive disorder (OCD) (Fitzgerald et al. 2005). The contribution of ACC morphology to CC skills has been recently investigated by parameterizing variability in ACC sulcation (Huster et al. 2011; Borst et al. 2014; Cachia et al. 2014), which is primarily assessed by quantifying the occurrence and extension of the paracingulate sulcus (PCS), a secondary sulcus that runs dorsal and parallel to the cingulate sulcus (CS) on the medial surface of the ACC (Ono et al. 1990; Paus et al. 1996; Vogt and Palomero-Gallagher 2012). Differently from quantitative measures of cortex structure (e.g., cortical thickness, surface area, or gyrification index), the ACC sulcal pattern is a neurodevelopmental marker determined in utero (Chi et al. 1977; Welker 1990; Mangin et al. 2010) and largely unaffected by brain maturation (Cachia et al. 2016; Tissier et al. 2018) or environmentally induced neuroplastic changes (Sun et al. 2012). While primary sulci (e.g., CS) emerge early during fetal development and are present in all individuals with stable characteristic locations and orientations, secondary, and tertiary sulci (e.g., PCS) begin to appear much later during gestation (in the second–third trimester) in approximately half of all neonates, thus, providing a clue to the study of individual differences in brain–behavior relationships (Chi et al. 1977; Armstrong et al. 1995). The occurrence of the PCS is the primary basis for identifying 2 types of ACC sulcation: a “single” type (CS only) and a “double parallel” type (CS and additional PCS) (Ono et al. 1990). The double parallel type is present in 30–60% of normal individuals (Paus et al. 1996; Yücel et al. 2001) with greater prevalence in the left hemisphere (Paus et al. 1996; Yücel et al. 2001; Leonard et al. 2009), thereby yielding a leftward asymmetry population bias. Although the specific factors mediating the development of the PCS and its asymmetry are still unclear, evidence suggests that individuals with asymmetrical ACC sulcal patterns as compared with those with symmetrical patterns exhibit a performance advantage across several

higher-order functions that draw on CC, such as reality monitoring (Whittle et al. 2009; Buda et al. 2011), inhibitory control (Huster et al. 2009; Borst et al. 2014; Cachia et al. 2014; Tissier et al. 2018), and verbal and spatial working memory (Fornito et al. 2004). The functional significance of individual differences in ACC sulcation has also been reported in clinical studies, where abnormal occurrence and/or morphology of the PCS have been linked to CC impairment in patients with full-blown schizophrenia (Yücel et al. 2002; Fornito et al. 2006; Garrison et al. 2015) as well as in individuals at-risk of developing schizophrenia symptoms (Yücel et al. 2003b).

A critical issue that has only begun to be inquired is the interaction between ACC sulcal anatomy and experience-related variables on CC efficiency. In a recent exploratory study, Cachia et al. (2017) contrasted the effect of the ACC sulcal pattern on the conflict resolution abilities of individuals from different linguistic environments, that is, bilinguals and monolinguals. Bilingual speakers heavily rely on CC functions to coordinate between languages and avoid cross-linguistic interference (Abutalebi and Green 2007). Neuroimaging evidence has shown that the extended use of such functions has structural and functional consequences in regions of the neural network that serves CC, including the dorsal ACC (Abutalebi et al. 2012; Abutalebi et al. 2015; De Baene et al. 2015). A number of studies report an association between bilingualism-induced neuroplastic changes in the CC network and better performance of bilinguals versus monolinguals on CC tasks, with a higher proportion of statistically significant benefits in seniors than young adults (Bialystok et al. 2012, 2016; Valian 2015). Recently, Cachia et al. (2017) found that the CC performance of bilinguals and monolinguals measured with the Flanker Task (Fan et al. 2005) was differentially affected by inter-individual variation in ACC folding, with asymmetrical versus symmetrical ACC sulcal patterns associated with a performance advantage in monolinguals and a performance detriment to bilinguals and vice versa. These findings suggest that long-term exposure to a second language may overcome the established effects of early neurodevelopmental constraints on CC performance. Despite the limitation of a relatively small sample size (17 bilinguals, 14 monolinguals, all females), the study provided a novel insight into the influence of neuroanatomical markers fixed prenatally and environment on behavior.

The present study aims to contribute to the current debate on the relationship between early neurodevelopment, environmental factors and cognitive function by moving the investigation in 2 directions. First, we provide a comprehensive account of the distributional characteristics of the PCS in a large sample of healthy individuals ($N = 270$) who differ in gender and ethnicity. This group-distribution analysis makes possible to investigate the effects of biologically determined factors such as gender and ethnicity on the sulcal anatomy of the ACC. Second, we investigate the long-term contribution of the inter-individual and intraindividual variability of the PCS to CC across age, and the extent to which this contribution may vary according to experiential factors such as living in a bilingual environment and speaking more than one language. To reach this goal, we selected a participants' subsample ($N = 157$) to test whether a classic in-lab executive measure of CC—that is, the Flanker Task (Fan et al. 2005)—is differentially modulated by the characteristics of the PCS in bilingual and monolingual speakers. The sulcal variability of the ACC was assessed with a categorical method that is sensitive to variations in the prevalence of the PCS within and across hemispheres. Specifically, a measure of PCS asymmetry was adopted based on Ono et al.'s classification (with the ACC sulcal pattern categorized as

“single/single” vs. “double parallel/double parallel” vs. “double parallel/single” vs. “single/double parallel”).

Based on previous accounts (Paus et al. 1996; Yücel et al. 2001) we expect a significant effect of ACC sulcal pattern driven by a prevalence of leftward PCS asymmetry. As the available evidence is respectively mixed (Ide et al. 1999; Yücel et al. 2001; Leonard et al. 2009) or insufficient (Wei et al. 2017), we do not have specific predictions for the effects of gender and ethnicity on ACC sulcal variability. On the other hand, consistent with findings from studies in monolinguals using conflict-related tasks such as the Stroop and the Flanker (Huster et al. 2009; Borst et al. 2014; Cachia et al. 2017), we predict monolinguals' performance to be shaped by ACC sulcal pattern, with leftward PCS asymmetry associated with a performance advantage as compared with the other patterns of ACC sulcation. It is also possible that the variable effects of ACC sulcation on CC will be different in young and older participants, due to specific patterns of interaction between sulcation pattern and cognitive function as age increases and executive attention declines. However, to our knowledge this is the first study to explore the impact of ACC sulcal patterns on the executive processing of participants ranging from early adulthood to old age (age range = 18–67 years). Finally, based on the findings from Cachia et al. (2017), we expect a significant difference in CC performance between bilingual and monolingual groups as a function of ACC sulcal pattern variability.

Materials and Methods

Participants

Overall, 275 ($N = 275$) right-handed adults with no history of neurological or psychiatric condition were initially included in the study. Five participants were excluded from subsequent analyses because of ambiguous ACC sulcation in one or both hemispheres. The final sample comprised 270 participants (mean age = 36.4 ± 18.7 ; range = 18:75) differing on gender (152 F, 118 M), ethnicity (Caucasian = 130; South Asian = 43; East Asian = 97) and linguistic profile (bilingual = 155; monolingual = 115). Educational history was reported for all participants (years of education: 15.4 ± 3.1 ; 5:26).

Mini Mental State Examination (MMSE) (Cockrell and Folstein 1988) was used to evaluate cognitive state for the participants over 50 years of age ($N = 102$) (inclusion threshold: ≥ 27 raw score). Mean raw score was 28.3 ± 1.6 and no participant was excluded due to clinical signs of cognitive impairment.

The age of acquisition (AoA) and proficiency of the second language (L2) were recorded for all bilinguals (overall AoA = 7.2 ± 7.8 ; 1:41; Caucasian AoA: 5.6 ± 4 ; South Asian AoA: 5.4 ± 3.9 ; East Asian AoA: 7.7 ± 8.9 ; overall proficiency (%) = 85 ± 12 ; Caucasian proficiency: 90 ± 6 ; South Asian proficiency: 93 ± 4 ; East Asian proficiency: 88 ± 6). L2 proficiency was established with a 30-item picture naming task using colored pictures from a revised version of the Snodgrass and Vanderwart picture set (Snodgrass and Vanderwart 1980) suitably modified for cultural familiarity and the different L2s spoken (Abutalebi et al. 2014).

The study was conducted with ethical approval from the Human Research Ethics Committees of the Universities, Centers or Institutes involved, that is, the Vita-Salute San Raffaele University (Milan, Italy), the University of Hong Kong (HKSAR), the National Brain Research Center (Manesar, India) and the Beijing Normal University (China). Written informed consent was obtained from all participants (Table 1).

MRI Acquisition and Analysis

Individual T1-weighted MR images ($N = 275$) were used for determining the ACC sulcal pattern of each participant. MPRAGE (Magnetization prepared Rapid Gradient Echo) images were acquired for 242 subjects in a 3 T Achieva Philips MR scanner (Philips Medical Systems, Best, Netherlands) at The University of Hong Kong (HKSAR), National Brain Research Center (Manesar, India) and Vita-Salute San Raffaele University (Milan, Italy) using identical exam cards with the following parameters: repetition time (TR) = 8.03 ms, echo time (TE) = 4.1 ms; flip angle = 8° , field of view (FOV) = 250×250 , matrix = 256, number of slices = 150, voxel size = $1.0 \times 1.0 \times 1.0 \text{ mm}^3$. MPRAGE images for additional 33 subjects were acquired with a 3 T Siemens Trio Scanner at Beijing Normal University with the following parameters: TR = 2530 ms, TE = 3.39 ms, flip angle = 7° , FOV = 256×256 , matrix = 256×256 , number of slices = 128, voxel size = $1.33 \times 1.0 \times 1.0 \text{ mm}^3$. All T1 images were visually inspected for the presence of any artefacts and no participant was discarded due to this reason. To overcome the potential bias from the sulcus shape deformations induced by the warping process, neither linear nor nonlinear spatial normalization to a common space (e.g., MNI or Talairach space) was applied to MRIs. The origin was set on all images to match the bicommissural line (AC-PC). All images were anonymised; labeling of ACC sulcal pattern in each hemisphere, based on the prevalence and morphology of the PCS, was carried out independently by 2 authors blind to participants' age, gender, ethnicity, and language group.

PCS Measurement and ACC Classification

Following Garrison's PCS measurement protocol (Garrison 2017), first reported in Garrison et al. (2015), all T1 data were imported into MANGO (Multi-image Analysis GUI, v 4.0, <http://ric.uthscsa.edu/mango/mango.html>, The University of Texas Health Science Center) and the cingulate sulcus (CS) was identified at 4 mm laterally from the midline ($x = 0$) on either hemisphere. The PCS was identified as the sulcus running dorsal and predominantly parallel to the CS and being clearly visible for at least 4 slices from the midline. At $x = 4$ mm, the anterior limit of the PCS was identified as the point at which the sulcus begins to move posteriorly from an imaginary line perpendicular to the AC-PC line and starts to run parallel to the CS. The PCS was measured from this point onwards using MANGO's “Trace Line” function. The measurement, incorporating both visual classification and automated components, was carried

Table 1 Languages spoken by monolingual ($N = 115$) and bilingual participants ($N = 155$)

Mono	Mandarin	Italian					
N	33	82					
Bil (L1)	Cantonese	Hindi	Dutch	Italian	German	Ladin	Ladin
N	64	43	20	9	15	1	3
Bil (L2)	English	English	English	German	Italian	German	Italian
N	64	44	20	9	15	1	3

out by 2 blind raters. Disagreement among raters on PCS identification was resolved by a third blind rater. Five participants (i.e., <2% of the whole dataset) had ambiguous ACC sulcation in one or both hemispheres, which rendered PCS identification particularly difficult (see Leonard et al. 2009 for discussion). Since ambiguity persisted after general inter-rater discussion, those 5 participants were discarded from the dataset and not included in subsequent analyses. Inter-rater agreement for the remaining 270 cases was above 95%.

The PCS was categorized as either “present” (≥ 20 mm) or “absent” (≤ 19 mm) following Ono’s nomenclature (Ono et al. 1990) as in our previous study with bilinguals (Cachia et al. 2017). When the PCS was discontinuous, sulcus elements were included in the measurement only when interruptions or gaps were ≤ 19 mm (Yücel et al. 2001; Garrison et al. 2015; Cachia et al. 2017). This binary classification was adopted since the occurrence of the PCS has been found to be stable with age (Clark et al. 2010; Cachia et al. 2016). Quantitative measures of ACC sulcal morphology such as sulcal width, depth, or length were not included in the analyses since these cortical features vary with age (Kochunov et al. 2005; Clark et al. 2010; Cachia et al. 2016), especially in multimodal areas such as the cingulate cortex (Kochunov et al. 2005; Li et al. 2011), which indicates that they can be modified both by brain maturation and environmentally induced plasticity.

Based on the occurrence of the PCS in each hemisphere, the ACC sulcal type was categorized as “single” (i.e., CS only) or “double parallel” (i.e., CS and additional PCS). An asymmetry index based on this classification was used to assess the interhemispheric distribution of the PCS in each brain: A = “single/single” (i.e., CS only in both hemispheres); B = “double parallel/double parallel” (i.e., CS and additional PCS in both hemispheres); C = “double parallel/single” (i.e., leftward PCS asymmetry); D = “single/double parallel” (i.e., rightward PCS asymmetry) (Fig. 1).

Behavioral Assessment

In total, 157 ($N = 157$) right-handed adults performed a revised version of the Flanker Task (Fan et al. 2002; 2005). Among them, 94 participants were monolinguals and 63 were bilinguals. Participants were instructed to press the left or the right button of a mouse as quickly as possible depending on whether the target, a central arrow presented foveally on a computer screen for 1700 ms, pointed to left or right, respectively. Targets were presented in congruent, incongruent or neutral conditions, that is, with additional arrows flanked to the same direction as the target ($\rightarrow\rightarrow\rightarrow\rightarrow$), with additional arrows flanked to the opposite direction of the target ($\leftarrow\leftarrow\leftarrow\leftarrow$) or with additional neutral lines ($--\rightarrow--$). Whereas the neutral lines surrounding the target typically bias neither the correct nor the incorrect response, the incongruent flankers represent conflicting information with the correct response and are generally associated with decline in performance, that is, lower accuracy and increasing response time (RT). By contrast, congruent flankers favor the correct response and are generally associated with better performance, that is, higher accuracy and lower RTs. Our key behavioral contrast was between RTs on incongruent and congruent trials, that is, the “conflict” effect on decision time (Fan et al. 2002). Congruent, incongruent and neutral trials (64 for each condition; overall = 192) were presented in a pseudorandomized order. Prior to the experiment, participants had a practice run consisting of 24 pseudorandomized trials. Stimulus presentation and data collection were controlled using Presentation software system v.18 (www.neurobs.com).

Statistical Analyses

Statistical analyses were run to 1) explore the distribution of the ACC sulcal pattern (ACC sulcal pattern distribution) and 2) investigate its effects on CC performance (Effects of ACC sulcal pattern on CC). All analyses were performed using R (R Core Team 2016, <https://www.r-project.org/>).

ACC sulcal pattern distribution: An ordinal logistic regression model was run to explore the prevalence of the PCS within and across hemispheres in a large sample of healthy individuals ($N = 270$) differing on gender and ethnicity.

The model had ACC sulcal pattern (“single/single,” “double parallel/double parallel,” “leftward PCS asymmetry,” “rightward PCS asymmetry”) as dependent variable and Gender (“male” vs. “female”; reference level = male) and Ethnicity (“Caucasian” vs. “South Asian” vs. “East Asian”; reference level = Caucasian) as predictors. The model was run with the Mass package.

Effects of ACC sulcal pattern on CC: We used a participants’ subsample ($N = 157$) to assess whether CC performance was differentially modulated by the ACC sulcal pattern distribution in bilingual ($N = 63$) and monolingual speakers ($N = 94$). To reach this goal, we ran a linear mixed-effects model.

The model was run using participants’ RTs on the Flanker task as dependent variable and Flanker condition (“congruent” vs. “incongruent”; reference level = congruent), ACC sulcal pattern (“single/single” vs. “double parallel/double parallel” vs. “leftward PCS asymmetry” vs. “rightward PCS asymmetry”; reference level = “single/single”), Language group (“monolingual” vs. “bilingual”; reference level = monolingual) and Age (as a continuous variable) as predictors. The model also included participants’ Gender, Education (in years), and Native language as covariates (which allowed to control for potentially confounding variables), as well as by-participants random intercepts for the random part of the model.

A second model identical to the first was run with ACC sulcal pattern (“single/single” vs. “double parallel/double parallel” vs. “leftward PCS asymmetry” vs. “rightward PCS asymmetry”; reference level = “single/single”) instead of ACC sulcal type as predictor (the model did not include Hemisphere as a factor). The model was fitted using the lmer function (lmer Test package; Kuznetsova et al. 2013).

Results

ACC sulcal pattern distribution: Tables 2 and 3 report absolute numbers and proportions of ACC sulcal types and patterns within and across hemispheres. Of note, the ACC sulcal pattern distribution was not affected by Language Group ($\beta = -0.50$, st. err. = 0.27, $t = -1.8$, $P = 0.07$) or Language Group \times Hemisphere interaction ($\beta = 0.06$, st. err. = 0.36, $t = 0.17$, $P > 0.8$).

The model for ACC sulcal pattern showed no significant effects either of Gender ($\beta = -0.09$, st. err. = 0.16, $t < 1$, $P > 0.5$) or Ethnicity (East Asian: $\beta = -0.16$, st. err. = 0.17, $t = -1.53$, $P > 0.3$; South Asian: $\beta = 0.16$, st. err. = 0.22, $t = 1.02$, $P > 0.4$).

Effects of ACC sulcal pattern on CC: The model for the effect of ACC sulcal pattern on Flanker RTs showed a main effect of Age ($\beta = 3.65$, st. err. = 1.12, $t = 3.11$, $P = 0.002$) and 2-way interactions between Flanker condition and Age ($\beta = 2.29$, st. err. = 0.31, $t = 7.21$, $P < 0.001$), Flanker condition and Language group ($\beta = 56.39$, st. err. = 20.31, $t = 2.77$, $P = 0.005$) and Flanker condition and ACC sulcal pattern ($\beta = 49.48$, st. err. = 20.65, $t = 2.39$, $P = 0.01$). Three higher order interactions were also significant: 1) a Flanker condition \times Age \times Language group interaction ($\beta = -1.28$, st. err. = 0.41, $t = -3.12$, $P = 0.001$) showing that while

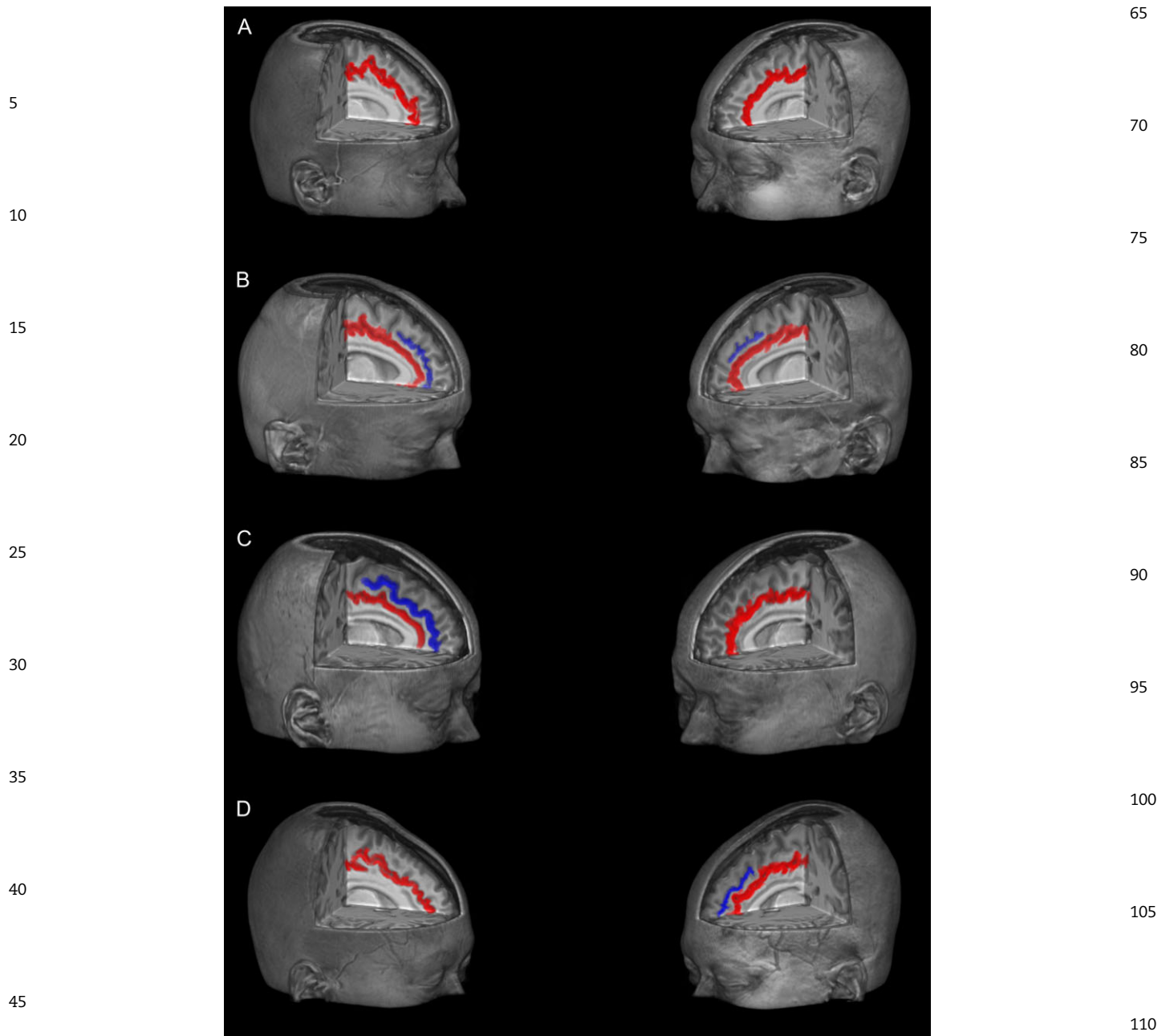


Figure 1. Sulcal morphology of the anterior cingulate cortex (ACC). The cingulate sulci (CS) are highlighted in red; the paracingulate sulci (PCS) are highlighted in blue. A binary classification was used to assess the occurrence of the PCS in each hemisphere: “single” type (i.e., CS only)/“double parallel” type (i.e., CS and additional PCS) of ACC sulcation. An asymmetry index based on this classification was used to assess the distribution of the PCS across the 2 hemispheres. (A) “Single/single” (i.e., CS only in both hemispheres); (B) “double parallel/double parallel” (i.e., CS and additional PCS in both hemispheres); (C) “double parallel/single” (i.e., leftward PCS asymmetry); and (D) “single/double parallel” (i.e., rightward PCS asymmetry).

monolinguals outperform bilinguals at a young age, CC decline is larger in monolinguals as age increases (Fig. 3); 2) a Flanker condition \times Age \times ACC sulcal pattern interaction ($\beta = -1.46$, st. err. = 0.43, $t = -3.34$, $P = 0.008$) indicating that the Flanker effect is larger in older than younger participants and its increase is maximal with “single/single” patterns of ACC sulcation (i.e., when the PCS is absent in both hemispheres (Fig. 2); and 3) a Flanker condition \times Language group \times ACC sulcal pattern interaction ($\beta = -50.89$, st. err. = 25.55, $t = -1.99$, $P = 0.04$) showing that while asymmetrical patterns of ACC sulcation contribute to greater CC efficiency in monolinguals, a reversed pattern of

structure–function relationship is found in bilinguals, that is, symmetrical patterns are associated with superior performance in bilinguals (Fig. 4). No other effect reached significance (all t s < 1.8 , P s > 0.06).

Discussion

The purpose of the present study was 2-fold: 1) to provide a distributional account of the ACC sulcal patterns in a large sample of healthy individuals differing on gender and ethnicity; 2) to test whether prenatal neurodevelopmental mechanisms

Table 2 Distribution of the anterior cingulate cortex (ACC) sulcal type in a large sample ($N = 270$) of healthy individuals differing on gender and ethnicity. Two types of ACC sulcation were identified based on the occurrence of the paracingulate sulcus (PCS) in each hemisphere (0 = “single” type, i.e., cingulate sulcus only; 1 = “double parallel” type, i.e., cingulate sulcus and additional PCS). Incidence rates (%) are calculated within groups and reported in brackets

	Hemisphere		Gender				Ethnicity					
			M		F		Caucasian		East Asian		South Asian	
	Left	Right	Left	Right	Left	Right	Left	Right	Left	Right	Left	Right
0	120	153	55	68	65	85	58	71	44	62	18	20
1	150 (56.17)	117 (43.33)	63 (55.75)	50 (42.37)	87 (56.49)	67 (44.07)	72 (54.96)	59 (45.38)	53 (60.22)	35 (36.08)	25 (58.13)	23 (53.48)

Table 3 Distribution of the anterior cingulate cortex (ACC) sulcal pattern in a large sample ($N = 270$) of healthy individuals differing on gender and ethnicity. An asymmetry index based on the “single”/“double parallel” type classification was used to assess the distribution of the PCS across the 2 hemispheres (0 = “single/single,” i.e., cingulate sulcus only in both hemispheres; 1 = “double parallel/double parallel,” i.e., cingulate sulcus and additional PCS in both hemispheres; 2 = “double parallel/single,” i.e., leftward PCS asymmetry; 3 = “single/double parallel,” i.e., rightward PCS asymmetry). Incidence rates (%) are calculated within groups and reported in brackets

	Overall	Gender		Ethnicity		
		M	F	Caucasian	East Asian	South Asian
0	48 (17.77)	17 (14.40)	31 (20.39)	26 (20.0)	11 (11.34)	11 (25.58)
1	72 (26.66)	38 (32.20)	34 (22.36)	32 (24.61)	33 (34.02)	7 (16.27)
2	81 (30.0)	30 (25.42)	51 (33.55)	39 (30.0)	29 (29.89)	13 (30.23)
3	69 (25.55)	33 (27.96)	36 (23.68)	33 (25.38)	24 (24.74)	12 (27.90)

modulate the effects of different environmental backgrounds (i.e., bilingualism versus monolingualism) on CC performance.

ACC Sulcal Pattern Distribution

A “double parallel” type of ACC sulcation was detected in 49.44% of our sample irrespective of hemisphere, in line with previous findings according to which the “double parallel” sulcal type is present in 30–60% of the normal population (Paus et al. 1996; Yücel et al. 2001). Resulting from neurodevelopmental processes starting as early as 10 weeks of fetal life (White et al. 2010), the ACC sulcal pattern is a qualitative feature of cortex anatomy which is stable from childhood to adulthood **irrespective of** brain maturation and environmental factors (Sun et al. 2012; Cachia et al. 2016). The distribution of the ACC sulcal pattern was significantly affected by hemispheric laterality, with the “double parallel” type more frequently present than absent on the left hemisphere and more frequently absent than present on the right (Table 2). This leftward bias largely confirms previous data from postmortem studies of healthy brain specimens (Ide et al. 1999) and structural MRI investigations of intact living brains (Paus 1996; Yücel et al. 2001; Fornito et al. 2004; Huster et al. 2007; Leonard et al. 2009; Wei et al. 2017). Remarkably, prior work on psychiatric populations with CC deficits failed to report comparable laterality effects, showing a reduced degree of leftward PCS asymmetry in patients versus healthy controls (Marquardt et al. 2002; Le Provost et al.

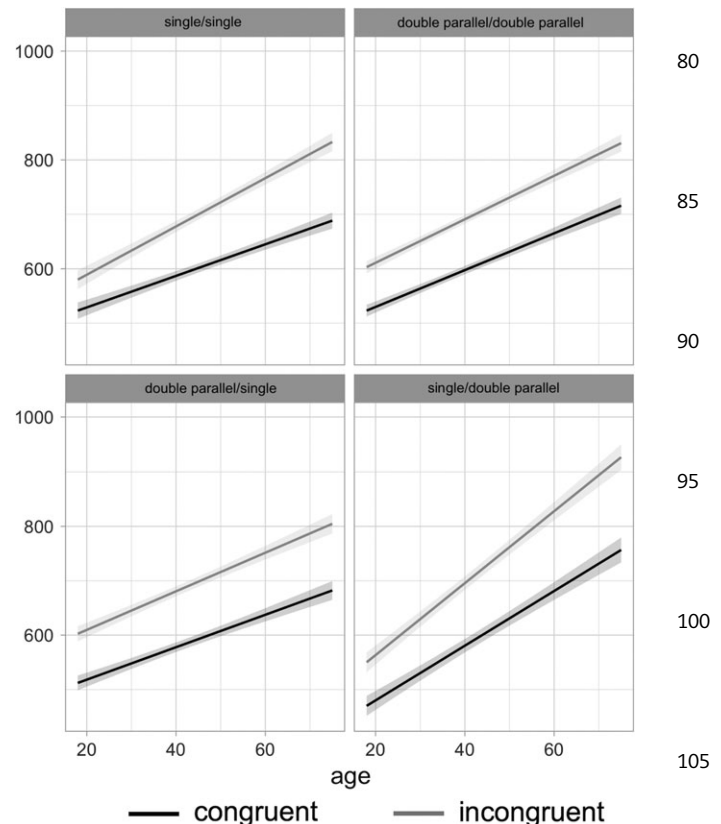


Figure 2. Predicted values for the 3-way interaction between Flanker condition (congruent vs. incongruent), Age (continuous variable) and ACC sulcal pattern (“single/single” vs. “double parallel/double parallel” vs. “double parallel/single” vs. “single/double parallel”) on response time (RT) performance.

2003; Yücel et al. 2002; 2003a; Fujiwara et al. 2007) and a reduced PCS extent in hallucinating patients versus nonhallucinating patients and healthy controls (Garrison et al. 2015).

When we tested the effects of gender and ethnicity on ACC folding, we found that these variables had no significant impact on the distributional characteristics of the ACC sulcal pattern, nor on the presence of a leftward bias in our sample.

With respect to gender membership, the incidence rates (%) of “single” and “double parallel” types of ACC sulcation in the left and right hemispheres were balanced between groups (Table 2), with higher proportions of bilateral presence of the PCS and rightward PCS asymmetry in males versus females and higher proportions of bilateral absence of the PCS and leftward PCS asymmetry in females versus males, **although differences did not reach statistical significance** (Table 3). Some

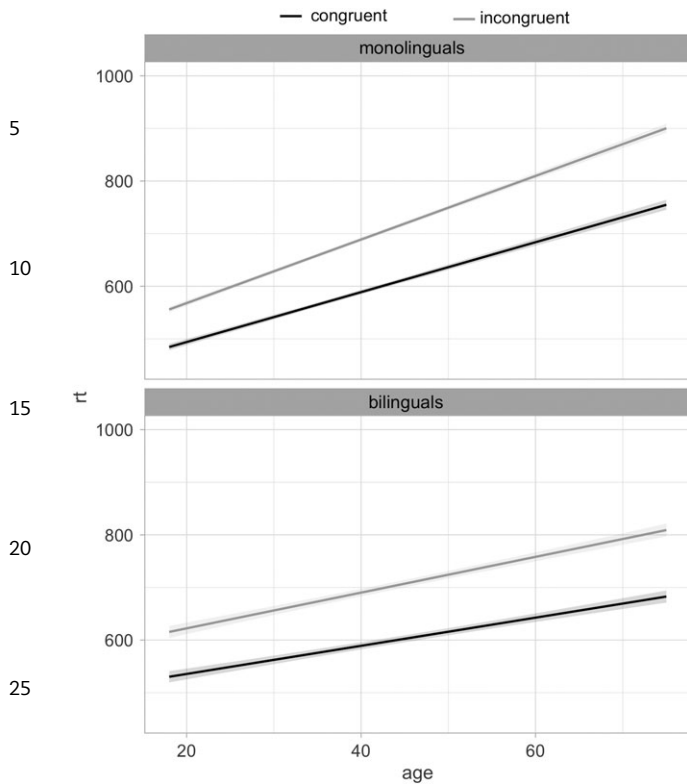


Figure 3. Predicted values for the 3-way interaction between Flanker condition (congruent vs. incongruent), Age (continuous variable), and Language group (monolingual vs. bilingual) on response time (RT) performance.

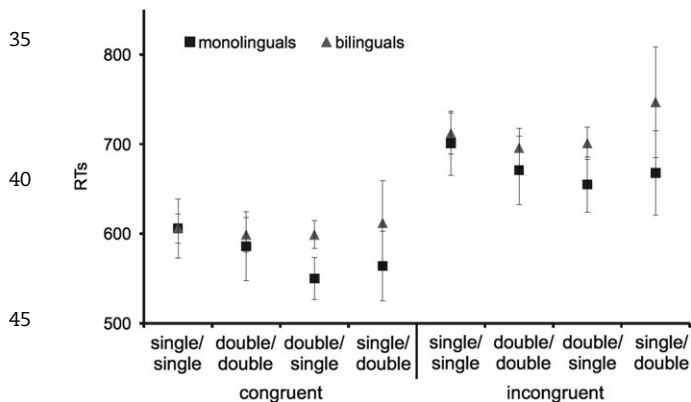


Figure 4. Predicted values for the 3-way interaction between Flanker condition (congruent vs. incongruent), Language group (monolingual vs. bilingual) and ACC sulcal pattern ("single/single" vs. "double parallel/double parallel" vs. "double parallel/single" vs. "single/double parallel") on response time (RT) performance.

previous studies failed to detect gender-related effects on ACC sulcation (Ide et al. 1999; Wei et al. 2017), whereas others reported greater leftward PCS asymmetry in males versus females (Yücel et al. 2001; Whittle et al. 2009; Clark et al. 2010) or in females versus males (Leonard et al. 2009). These inconsistencies are reflected in morphometric analyses of global (i.e., whole-brain) and localized (i.e., lobe-wise) effects of sexual dimorphism on the convolutional properties of the cerebral cortex (Zilles et al. 1988; Luders et al. 2004; Im et al. 2008; Toro et al. 2008). It should be further noted that a few studies found

an interaction between gender and handedness, with right-handed males and left handed females showing greater prevalence of leftward PCS asymmetry than left handed males and right-handed females (Huster et al. 2007; Wei et al. 2017). As our participants were all right handers, we were unable to test whether hand preference interacted with gender membership in modulating ACC sulcation.

With respect to ethnicity, the "double parallel" type of ACC sulcation was more frequently lateralized to the left versus right hemisphere in all ethnic groups (i.e., Caucasian, East Asian, and South Asian), with a proportionally higher occurrence of "double parallel" (on the left) and "single" type (on the right) of ACC sulcation in East Asians compared with the other groups, although differences did not reach statistical significance (Table 2). A higher proportion of bilateral presence of the PCS and a lower proportion of bilateral absence of the PCS were also reported for the same group when compared with the others (Table 3). Previous morphometric studies have reported global and regional differences in brain structure between Caucasian and Eastern populations such as Chinese, Koreans and Japanese (Lee et al. 2005; Tang et al. 2010; Uchiyama et al. 2013; Rao et al. 2017), which has led to the development of brain atlases specific to ethnicity (e.g., Chinese: Tang et al. 2010; Japanese: Uchiyama et al. 2013). To our knowledge, Wei et al. (2017) is the only study that explored whether ethnicity interferes with ACC sulcation by contrasting Caucasian (German and Belgian) and East Asian (Chinese) participants. In line with our results, no significant differences in ACC folding were reported as a function of ethnic group membership.

Effects of ACC Sulcal Pattern on CC

Performance on the Flanker decreased with age, consistent with previous evidence linking normal aging with a deterioration of the executive attention networks (West 1996; Mahoney et al. 2010; Zhou et al. 2011). A significant interaction between Flanker performance, age, and language group indicated that, although monolinguals outperformed bilinguals at a young age, bilinguals were more resistant to cognitive decline in terms of overall task performance (i.e., global RTs across congruent and incongruent conditions) and conflict experience (i.e., RT difference between incongruent and congruent conditions) (Fig. 3). Earlier studies investigating the cognitive effects of bilingualism in young and older populations have provided mixed results (Hilchey and Klein 2011; Paap et al. 2015), eliciting an ongoing debate on the potential benefits of multiple language use across the lifespan (de Bruin et al. 2015; Valian 2015; Bialystok et al. 2016). Drawing on relatively large language-group sizes, our findings suggest that sustained forms of cognitive stimulation such as lifelong bilingualism may contribute to postpone cognitive aging, thus acting as a cognitive reserve (Bialystok et al. 2008; Salvatierra and Rosselli 2011; Abutalebi et al. 2015; Talebi and Green 2016). Our current findings showing that task performance declines with increasing age is larger in monolingual than bilingual speakers are even more relevant when considering that our subjects have different ethnicities and cultural backgrounds (Europe, India, China, and Hong Kong).

Independent of language group membership, the participants' performance was modulated by individual differences in ACC morphology, with a larger decline of overall task performance in participants with rightward PCS asymmetry and a larger increase of conflict experience in participants with a bilateral absence of the PCS. Moreover, as compared with the other

patterns of ACC sulcation, leftward PCS asymmetry contributed to faster RTs on both conditions of the Flanker at an old age and to a conflict experience that was consistent from early to older adulthood (Fig. 2b). In previous studies using conflict monitoring tasks such as the Stroop and the Flanker, a bilateral absence of the PCS and a leftward PCS asymmetry have been associated—respectively—with a detriment to performance and with a performance advantage both in children (Borst et al. 2014; Cachia et al. 2014) and young adults (Huster et al. 2009; Buda et al. 2011; Cachia et al. 2017). When the behavioral effects of leftward and rightward asymmetry patterns were directly compared on tasks tapping CC processes, leftward asymmetry was consistently associated with a superior performance in terms of RT scores and/or accuracy rates (Fornito et al. 2004; Whittle et al. 2009; Buda et al. 2011). Our findings expand previous evidence and identify the distribution of the ACC sulcal pattern as a key predictor of executive behavior across the lifespan. The degree of regional fissurization of the cerebral cortex is known to be related with variations in local cytoarchitecture (Vogt et al. 1995; Paus et al. 1996) and intra- and inter-regional axonal connectivity (Welker 1990; Hilgetag and Barbas 2005; Toro and Burnod 2005). Variability in the sulcal anatomy of the ACC could thus lead to differences in CC performance through changes in connectivity between the cingulate area and other regions of the CC network such as adjacent portions of the prefrontal cortex (Vogt et al. 1995; Van Essen 1997; Koski and Paus 2000; Cachia et al. 2014). In particular, as CC tasks are thought to be largely reliant on left hemispheric processing (Langdon and Warrington 2000; Brown et al. 2001; Chokron et al. 2003), the association between higher CC efficiency and leftward PCS asymmetry might result from enhanced cingulofrontal connectivity in the left hemisphere (Fornito et al. 2004; Cachia et al. 2014). Conversely, the bilateral absence of the PCS as well as its right-lateralization should lead to a more effortful processing resulting in poorer CC performance. Further research utilizing both structural and functional imaging methods is needed to confirm this interpretation.

Of particular interest, as indexed by the significant interaction between Flanker, ACC sulcal pattern and language group, the functional consequences of ACC sulcal variability were differentially modulated by participants' linguistic background. Specifically, a reversed pattern of structure–function relationship between ACC morphology and CC performance was reported for bilingual and monolingual speakers: asymmetrical versus symmetrical sulcal patterns were associated with a performance advantage in monolinguals and a performance detriment to bilinguals and vice versa (Fig. 4). Using a different set of analyses on a much larger independent sample, this finding extends the results of the previous exploratory study by Cachia et al. (2017) and attests the dynamic interplay between fetal stages of brain development, environmental background, and cognitive functions. We posit that the long-term exposure to a second language may overcome the known correlation between leftward PCS asymmetry and better conflict resolution capacity, pointing to a compensatory effect of bilingualism over early and invariant neurodevelopmental factors. In particular, it is tempting to speculate that bilinguals rely more heavily on a bilateral recruitment of the CC network as compared with monolinguals, with a greater contribution of interhemispheric activity to executive functioning, which could explain the positive association between performance efficiency and ACC symmetrical patterns, as brain structural symmetry is thought to imply greater cross-hemispheric communication fostered by contralateral projections through the hemispheric commissures (Rosen et al. 1989;

Luders et al. 2003). Evidence in support of this hypothesis comes from functional MRI investigations reporting a bilateral recruitment of the ACC in bilinguals engaged in nonverbal executive tasks (Abutalebi et al. 2012; De Baene et al. 2015) as well as from diffusion tensor imaging studies showing increased fractional anisotropy values in the bilateral genu of the corpus callosum as a result of second language training (Schlegel et al. 2012) and second language immersion (Pliatsikas et al. 2015). Similar results were reported by Singh et al. (2018) showing increased radial diffusivity bilaterally in the forceps minor for bilinguals as opposed to monolinguals.

In conclusion, our results suggest that the ACC sulcal pattern—a stable morphological feature of cortical anatomy determined in utero and not affected by gender or ethnicity—is differentially associated with the CC abilities of bilingual and monolingual individuals across age. Altogether, our findings add a new piece of critical information to the neuroscience of bilingualism and provide novel evidence on the dynamic interplay between early neurodevelopment, environmental background and cognitive processing across the lifespan.

Notes

Conflict of Interest: None declared.

References

- Abutalebi J, Canini M, Della Rosa PA, Sheung LP, Green DW, Weekes BS. 2014. Bilingualism protects anterior temporal lobe integrity in aging. *Neurobiol Aging*. 35:2126–2133.
- Abutalebi J, Della Rosa PA, Green DW, Hernandez M, Scifo P, Keim R, Costa A. 2012. Bilingualism tunes the anterior cingulate cortex for conflict monitoring. *Cereb Cortex*. 22: 2076–2086.
- Abutalebi J, Green D. 2007. Bilingual language production: the neurocognition of language representation and control. *J Neurolinguistics*. 20:242–275.
- Abutalebi J, Green DW. 2016. Neuroimaging of language control in bilinguals: neural adaptation and reserve. *Biling Lang Cogn*. 19:689–698.
- Abutalebi J, Guidi L, Borsa V, Canini M, Della Rosa PA, Parris BA, Weekes BS. 2015. Bilingualism provides a neural reserve for aging populations. *Neuropsychologia*. 69:201–210.
- Baayen RH, Davidson DJ, Bates DM. 2008. Mixed-effects modeling with crossed random effects for subjects and items. *J Mem Lang*. 59:390–412.
- Bialystok E, Abutalebi J, Bak TH, Burke DM, Kroll JF. 2016. Aging in two languages: implications for public health. *Ageing Res Rev*. 27:56–60.
- Bialystok E, Craik F, Luk G. 2008. Cognitive control and lexical access in younger and older bilinguals. *J Exp Psychol*. 34:859.
- Bialystok E, Craik FI, Luk G. 2012. Bilingualism: consequences for mind and brain. *Trends Cogn Sci*. 16:240–250.
- Borst G, Cachia A, Vidal J, Simon G, Fischer C, Pineau A, Poirel N, Mangin JF, Houdé O. 2014. Folding of the anterior cingulate cortex partially explains inhibitory control during childhood: a longitudinal study. *Dev Cogn Neurosci*. 9:126–135.
- Botvinick MM, Braver TS, Barch DM, Carter CS, Cohen JD. 2001. Conflict monitoring and cognitive control. *Psychol Rev*. 108: 624.
- Brown WS, Thrasher ED, Paul LK. 2001. Interhemispheric Stroop effects in partial and complete agenesis of the corpus callosum. *J Int Neuropsychol Soc*. 7:302–311.

- Buda M, Fornito A, Bergström ZM, Simons JS. 2011. A specific brain structural basis for individual differences in reality monitoring. *J Neurosci*. 31:14308–14313.
- 5 Cachia A, Borst G, Tissier C, Fisher C, Plaze M, Gay O, Rivière D, Gogtay N, Giedd J, Mangin JF, et al. 2016. Longitudinal stability of the folding pattern of the anterior cingulate cortex during development. *Dev Cogn Neurosci*. 19:122–127.
- Cachia A, Borst G, Vidal J, Fischer C, Pineau A, Mangin JF, Houdé O. 2014. The shape of the ACC contributes to cognitive control efficiency in preschoolers. *J Cogn Neurosci*. 26:96–106.
- 10 Cachia A, Del Maschio N, Borst G, Della Rosa PA, Pallier C, Costa A, Houdé O, Abutaleb J. 2017. Anterior cingulate cortex sulcation and its differential effects on conflict monitoring in bilinguals and monolinguals. *Brain Lang*. 175:57–63.
- 15 Chi JG, Dooling EC, Gilles FH. 1977. Gyral development of the human brain. *Ann Neurol*. 1:86–93.
- Chokron S, Bartolomeo P, Colliot P, Brickman AM, Tabert M, Wei T, Buchsbaum MS. 2003. Selective attention, inhibition for repeated events and hemispheric specialization. *Brain Cogn*. 53:158–161.
- 20 Clark GM, Mackay CE, Davidson ME, Iversen SD, Collinson SL, James AC, Crow TJ. 2010. Paracingulate sulcus asymmetry; sex difference, correlation with semantic fluency and change over time in adolescent onset psychosis. *Psychiatry Res*. 184:10–15.
- 25 Cockrell JR, Folstein MF. 1988. Mini-mental state examination. *Psychopharmacol Bull*. 24:689–692.
- De Baene W, Duyck W, Brass M, Carreiras M. 2015. Brain circuit for cognitive control is shared by task and language switching. *J Cogn Neurosci*. 27:1752–1765.
- 30 de Bruin A, Treccani B, Della Sala S. 2015. Cognitive advantage in bilingualism an example of publication bias? *Psychol Sci*. 26:99–107.
- Devinsky O, Morrell MJ, Vogt BA. 1995. Contributions of anterior cingulate cortex to behaviour. *Brain*. 118:279–306.
- 35 Dickstein SG, Bannon K, Xavier Castellanos F, Milham MP. 2006. The neural correlates of attention deficit hyperactivity disorder: an ALE meta-analysis. *J Child Psychol Psychiatry*. 47:1051–1062.
- 40 Fan J, McCandliss BD, Fossella J, Flombaum JI, Posner MI. 2005. The activation of attentional networks. *Neuroimage*. 26:471–479.
- Fan J, McCandliss BD, Sommer T, Raz A, Posner MI. 2002. Testing the efficiency and independence of attentional networks. *J Cogn Neurosci*. 14:340–347.
- 45 Fitzgerald KD, Welsh RC, Gehring WJ, Abelson JL, Himle JA, Liberzon I, Taylor SF. 2005. Error-related hyperactivity of the anterior cingulate cortex in obsessive-compulsive disorder. *Biol Psychiatry*. 57:287–294.
- 50 Fjell AM, Walhovd KB, Brown TT, Kuperman JM, Chung Y, Hagler DJ, Venkatraman V, Roddey JC, Erhart M, McCabe C, et al. 2012. Multimodal imaging of the self-regulating developing brain. *Proc Natl Acad Sci USA*. 109:19620–19625.
- Fornito A, Yücel M, Dean B, Wood SJ, Pantelis C. 2009. Anatomical abnormalities of the anterior cingulate cortex in schizophrenia: bridging the gap between neuroimaging and neuropathology. *Schizophr Bull*. 35:973–993.
- 55 Fornito A, Yücel M, Wood SJ, Proffitt T, McGorry PD, Velakoulis D, Pantelis C. 2006. Morphology of the paracingulate sulcus and executive cognition in schizophrenia. *Schizophr Res*. 88:192–197.
- 60 Fornito A, Yücel M, Wood S, Stuart GW, Buchanan JA, Proffitt T, Anderson V, Velakoulis D, Pantelis C. 2004. Individual differences in anterior cingulate/paracingulate morphology are related to executive functions in healthy males. *Cereb Cortex*. 14:424–431.
- Fujiwara H, Hirao K, Namiki C, Yamada M, Shimizu M, Fukuyama H, Hayashi T, Murai T. 2007. Anterior cingulate pathology and social cognition in schizophrenia: a study of gray matter, white matter and sulcal morphometry. *Neuroimage*. 36:1236–1245.
- 70 Garrison J. 2017. Paracingulate Sulcus Measurement Protocol [Software]. Available from: URL <https://doi.org/10.17863/CAM.9986>
- Garrison JR, Fernyhough C, McCarthy-Jones S, Haggard M, Simons JS. 2015. Paracingulate sulcus morphology is associated with hallucinations in the human brain. *Nature Commun*. 6:8956.
- 75 Hilchey MD, Klein RM. 2011. Are there bilingual advantages on nonlinguistic interference tasks? Implications for the plasticity of executive control processes. *Psychon Bull Rev*. 18:625–658.
- Hilgetag CC, Barbas H. 2005. Developmental mechanics of the primate cerebral cortex. *Anat Embryol (Berl)*. 210:411.
- Huster RJ, Westerhausen R, Herrmann CS. 2011. Sex differences in cognitive control are associated with midcingulate and callosal morphology. *Brain Struct Funct*. 215:225–235.
- 85 Huster RJ, Westerhausen R, Kreuder F, Schweiger E, Wittling W. 2007. Morphologic asymmetry of the human anterior cingulate cortex. *Neuroimage*. 34:888–895.
- 90 Huster RJ, Wolters C, Wollbrink A, Schweiger E, Wittling W, Pantev C, Junghofer M. 2009. Effects of anterior cingulate fissurization on cognitive control during stroop interference. *Hum Brain Mapp*. 30:1279–1289.
- Ide A, Dolezal C, Fernández M, Labbe E, Mandujano R, Montes S, Segura P, Verschae G, Yarmuch P, Aboitiz F. 1999. Hemispheric differences in variability of fissural patterns in parasylvian and cingulate regions of human brains. *J Comp Neurol*. 410:235–242.
- 95 Im K, Lee JM, Lyttelton O, Kim SH, Evans AC, Kim SI. 2008. Brain size and cortical structure in the adult human brain. *Cereb Cortex*. 18:2181–2191.
- Kochunov P, Mangin JF, Coyle T, Lancaster J, Thompson P, Rivière D, Cointepas Y, Régis J, Schlosser A, Royall DR, et al. 2005. Age-related morphology trends of cortical sulci. *Hum Brain Mapp*. 26:210–220.
- 105 Kuznetsova A, Brockhoff PB, Christensen RHB. 2013. lmerTest: tests for random and fixed effects for linear mixed effect models (lmer objects of lme4 package). Available from: URL <http://cran.r-project.org/package=lmerTest>.
- 110 Langdon D, Warrington EK. 2000. The role of the left hemisphere in verbal and spatial reasoning tasks. *Cortex*. 36:691–702.
- Le Provost JB, Bartres-Faz D, Paillere-Martinot ML, Artiges E, Pappata S, Recasens C, Perez-Gomez M, Bernardo M, Baeza I, Bayle F, et al. 2003. Paracingulate sulcus morphology in men with early-onset schizophrenia. *Br J Psychiatry*. 182:228–232.
- 115 Lee JS, Lee DS, Kim J, Kim YK, Kang E, Kang H, Kwon JS. 2005. Development of Korean standard brain templates. *J Korean Med Sci*. 20:483–488.
- Leonard CM, Towler S, Welcome S, Chiarello C. 2009. Paracingulate asymmetry in anterior and midcingulate cortex: sex differences and the effect of measurement technique. *Brain Struct Funct*. 213:553–569.
- 125 Li S, Xia M, Pu F, Li D, Fan Y, Niu H, Pei B, He Y. 2011. Age-related changes in the surface morphology of the central sulcus. *Neuroimage*. 58:381–390.

- Luders E, Narr KL, Thompson PM, Rex DE, Jancke L, Steinmetz H, Toga AW. 2004. Gender differences in cortical complexity. *Nat Neurosci.* 7:799–800.
- 5 Luders E, Rex DE, Narr KL, Woods RP, Jancke L, Thompson PM, Mazziotta CJ, Toga AW. 2003. Relationships between sulcal asymmetries and corpus callosum size: gender and handedness effects. *Cereb Cortex.* 13:1084–1093.
- Mahoney JR, Verghese J, Goldin Y, Lipton R, Holtzer R. 2010. Alerting, orienting, and executive attention in older adults. *J Int Neuropsychol Soc.* 16:877–889.
- 10 Mangin JF, Jouvent E, Cachia A. 2010. In-vivo measurement of cortical morphology: means and meanings. *Curr Opin Neurol.* 23:359–367.
- 15 Marquardt RK, Levitt JG, Blanton RE, McCracken JT, Toga A. 2002. Abnormal morphometric characteristics of the anterior cingulate gyrus in children with autism. *Biol Psychiatry.* 51:193s.
- Ono M, Kubik S, Abarnathey CD. 1990. Atlas of the cerebral sulci. New York: Georg Thieme, Verlag.
- 20 Paap KR, Johnson HA, Sawi O. 2015. Bilingual advantages in executive functioning either do not exist or are restricted to very specific and undetermined circumstances. *Cortex.* 69:265–278.
- 25 Palomero-Gallagher N, Mohlberg H, Zilles K, Vogt B. 2008. Cytology and receptor architecture of human anterior cingulate cortex. *J Comp Neurol.* 508:906–926.
- PausTKoskiL2000Functional connectivity of the anterior cingulate cortex within the human frontal lobe: a brain-mapping meta-analysis *Exp Brain Res* 133:55–65
- 30 Paus T, Tomaiuolo F, Otaky N, MacDonald D, Petrides M, Atlas J, Morris R, Evans AC. 1996. Human cingulate and paracingulate sulci: pattern, variability, asymmetry, and probabilistic map. *Cereb Cortex.* 6:207–214.
- Petersen SE, Posner MI. 2012. The attention system of the human brain: 20 years after. *Annu Rev Neurosci.* 35:73–89.
- 35 Pliatsikas C, Moschopoulou E, Saddy JD. 2015. The effects of bilingualism on the white matter structure of the brain. *Proc Natl Acad Sci USA.* 112:1334–1337.
- 40 Rao NP, Jeelani H, Achalia R, Achalia G, Jacob A, Bharath RD, Varambally S, Venkatasubramanian G, Yalavarthy PK. 2017. Population differences in brain morphology: need for population specific brain template. *Psychiatry Res Neuroimaging.* 265:1–8.
- 45 Rosen GD, Sherman GF, Galaburda AM. 1989. Interhemispheric connections differ between symmetrical and asymmetrical brain regions. *Neuroscience.* 33:525–533.
- Salvatierra JL, Rosselli M. 2011. The effect of bilingualism and age on inhibitory control. *Int J Biling.* 15:26–37.
- 50 Schlegel AA, Rudelson JJ, Peter UT. 2012. White matter structure changes as adults learn a second language. *J Cogn Neurosci.* 24:1664–1670.
- Singh NC, Rajan A, Malagi A, Ramanujan K, Canini M, Della Rosa PA, Raghunathan P, Weekes BS, Abutalebi J. 2018. Microstructural anatomical differences between bilinguals and monolinguals. *Biling Lang Cogn.* <https://doi.org/10.1017/S1366728917000438> (in press).
- 55 Snodgrass JG, Vanderwart M. 1980. A standardized set of 260 pictures: norms for name agreement, image agreement, familiarity, and visual complexity. *J Exp Psychol Hum Learn.* 6:174.
- 60 Sun ZY, Klöppel S, Rivière D, Perrot M, Frackowiak R, Siebner H, Mangin JF. 2012. The effect of handedness on the shape of the central sulcus. *Neuroimage.* 60:332–339.
- Takeuchi H, Taki Y, Sassa Y, Hashizume H, Sekiguchi A, Nagase T, Nouchi R, Fukushima A, Kawashima R. 2012. Regional gray and white matter volume associated with Stroop interference: evidence from voxel-based morphometry. *Neuroimage.* 59:2899–2907.
- Tang Y, Hojatkashani C, Dinov ID, Sun B, Fan L, Lin X, Toga AW. 2010. The construction of a Chinese MRI brain atlas: a morphometric comparison study between Chinese and Caucasian cohorts. *Neuroimage.* 51:33–41.
- 75 **Tissier C, Linzarini A, Allaire-Duquette G, Mevel K, Poirel N, Dollfus S, Etard O, Orliac F, Peyrin C, Charon S, et al. 2018. Sulcal polymorphisms of the IFC and ACC contribute to inhibitory control variability in children and adults. *eNeuro.* 5. (in press).**
- 80 Toro R, Burnod Y. 2005. A morphogenetic model for the development of cortical convolutions. *Cereb Cortex.* 15:1900–1913.
- Toro R, Perron M, Pike B, Richer L, Veillette S, Pausova Z, Paus T. 2008. Brain size and folding of the human cerebral cortex. *Cereb Cortex.* 18:2352–2357.
- 85 Uchiyama HT, Seki A, Tanaka D, Koeda T. 2013. A study of the standard brain in Japanese children: morphological comparison with the MNI template. *Brain Dev.* 35:228–235.
- Valian V. 2015. Bilingualism and Cognition. *Biling Lang Cogn.* 18:3–24.
- 90 Van Essen DC. 1997. A tension-based theory of morphogenesis and compact wiring in the central nervous system. *Nature.* 385:313.
- Vogt BA, Nimchinsky EA, Vogt LJ, Hof PR. 1995. Human cingulate cortex: surface features, flat maps, and cytoarchitecture. *J Comp Neurol.* 359:490–506.
- 95 **Vogt BA, Palomero-Gallagher N. 2012. Cingulate cortex. In: Mai JK, Paxinos G, editors. The human nervous system. Academic Press. p. 947–987.**
- 100 Wei X, Yin Y, Rong M, Zhang J, Wang L, Wu Y, Cai Q, Yu C, Wang J, Jiang T. 2017. Paracingulate sulcus asymmetry in the human brain: effects of sex, handedness, and race. *Sci Rep.* 7:42033.
- 105 Welker W. 1990. Why does cerebral cortex fissure and fold? In: Peters A, Jones EG, editors. *Cerebral Cortex.* New York: Plenum Press. p. 3–136.
- West RL. 1996. An application of prefrontal cortex function theory to cognitive aging. *Psychol Bull.* 120:272–292.
- 110 Westlye LT, Grydeland H, Walhovd KB, Fjell AM. 2011. Associations between regional cortical thickness and attentional networks as measured by the attention network test. *Cereb Cortex.* 21:345–356.
- White T, Su S, Schmidt M, Kao CY, Sapiro G. 2010. The development of gyrification in childhood and adolescence. *Brain Cogn.* 72:36–45.
- 115 Whittle S, Allen NB, Fornito A, Lubman DI, Simmons JG, Pantelis C, Yücel M. 2009. Variations in cortical folding patterns are related to individual differences in temperament. *Psychiatry Res.* 172:68–74.
- 120 Yeung N. 2013. Conflict monitoring and cognitive control. In: Ochsner KN, Kosslyn S, editors. *The Oxford handbook of cognitive neuroscience: volume 2: the cutting edges.* Oxford-New York: Oxford University Press.
- 125 Yücel M, Stuart GW, Maruff P, Velakoulis D, Crowe SF, Savage G, Pantelis C. 2001. Hemispheric and gender-related differences in the gross morphology of the anterior cingulate/paracingulate cortex in normal volunteers: an MRI morphometric study. *Cereb Cortex.* 11:17–25.

- Yücel M, Stuart GW, Maruff P, Wood SJ, Savage GR, Smith DJ, Crowe SF, Copolov DL, Velakoulis D, Pantelis C. 2002. Paracingulate morphologic differences in males with established schizophrenia: a magnetic resonance imaging morphometric study. *Biol Psychiatry*. 52:15–23. 5
- Yücel M, Wood SJ, Fornito A, Riffkin J, Velakoulis D, Pantelis C. 2003a. Anterior cingulate dysfunction: implications for psychiatric disorders? *J Psychiatry Neurosci*. 28:350.
- Yücel M, Wood SJ, Phillips LJ, Stuart GW, Smith DJ, Yung A, Velakoulis D, McGorry PD, Pantelis C. 2003b. Morphology of the anterior cingulate cortex in young men at ultra-high risk of developing a psychotic illness. *Br J Psychiatry*. 182:518–524. 10
- Zhou SS, Fan J, Lee TM, Wang CQ, Wang K. 2011. Age-related differences in attentional networks of alerting and executive control in young, middle-aged, and older Chinese adults. *Brain Cogn*. 75:205–210. 65
- Zilles K, Armstrong E, Schleicher A, Kretschmann HJ. 1988. The human pattern of gyrification in the cerebral cortex. *Anat Embryol (Berl)*. 179:173–179.
- Zilles K, Palomero-Gallagher N, Amunts K. 2013. Development of cortical folding during evolution and ontogeny. *Trends Neurosci*. 36:275–284. 70
- Zilles K, Schleicher A, Langemann C, Amunts K, Morosan P, Palomero-Gallagher N, Schormann T, Mohlberg H, Bürgel U, Steinmetz H, et al. 1997. Quantitative analysis of sulci in the human cerebral cortex: development, regional heterogeneity, gender difference, asymmetry, intersubject variability and cortical architecture. *Hum Brain Mapp*. 5:218–221. 75
- 80
- 85
- 90
- 95
- 100
- 105
- 110
- 115
- 120
- 125